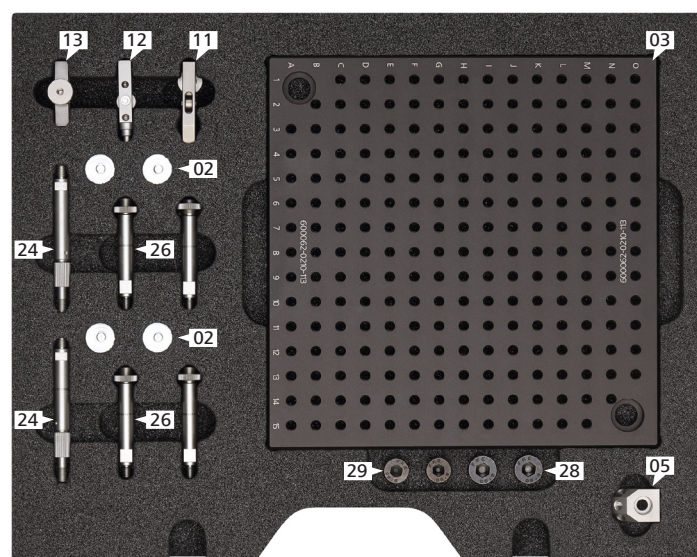
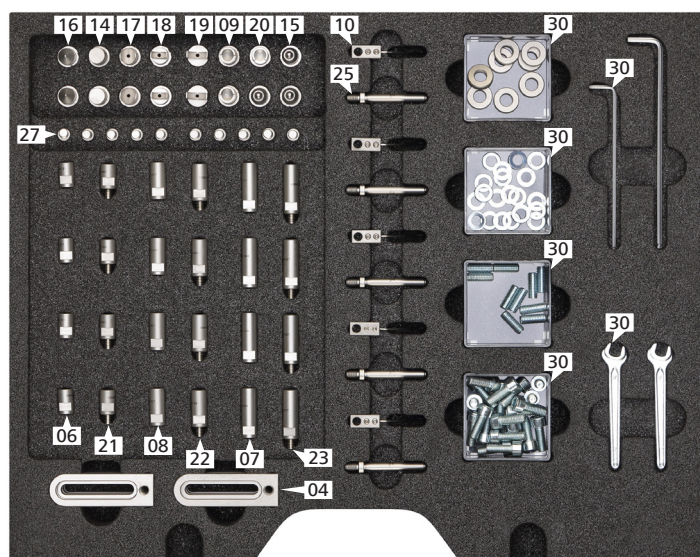




OmniFix Kit M6 240x240

600062-0351-023



Pos.	Item no.	Qty.	Description
01	600062-0351-023	1	OmniFix Kit - M6, 240x240mm
02	600062-0001-245	4	Part Fastening D20 M6 - Flat Magnet
03	600062-0210-113	1	Gridplate 15x240x240, Grid 15x15mm - M6
04	600062-0210-114	6	Bracket 20x10x64 - M6
05	600062-0210-120	1	Connecting Elements D10 M6 - Angle 45°
06	600062-0210-131	4	Column D10 M6 FF - L15
07	600062-0351-008	4	Column D10 M6 FF - L30
08	600062-0351-007	4	Column D10 M6 FF - L22,5
09	600062-0351-009	2	Part Support D10 M8x0,5 - Longitudinal
10	600062-0215-013	5	Part Fastening D10 D5 - Wire Clip
11	600062-0215-015	1	Part Fastening D10 M6 - Pliers Clamp
12	600062-0215-016	1	Part Fastening D10 M6 - Parallel Clamp
13	600062-0215-017	1	Connecting Elements D10 M6 - Hinge L40
14	600062-0215-009	2	Part Support D10 M8x0,5 - Flat Support
15	600062-0215-006	3	Part Support D10 M8x0,5 - Spherical
16	600062-0215-008	2	Part Support D10 M8x0,5 - Cone Support
17	600062-0215-007	2	Part Support D10 M8x0,5 - Prism D10

Pos.	Item no.	Qty.	Description
18	600062-0215-028	2	Part Support D10 M8x0,5 - Prism D10, narrow
19	600062-0215-029	2	Part Support D10 M8x0,5 - Prism D14, narrow
20	600062-0215-005	1	Part Support D10 M8x0,5 - Corner Support
21	600062-0215-025	4	Column D10 M6 MF - L15
22	600062-0215-026	4	Column D10 M6 MF - L22,5
23	600062-0215-027	4	Column D10 M6 MF - L30
24	600062-0215-014	2	Column D10 M6 - Adjustable
25	600062-0215-010	5	Part Fastening D10 - Column for Clip, L=40mm
26	600062-0215-004	4	Column D10 M6/M8x0,5 - L50
27	600062-0215-020	10	Thread Adapter M6 - M8x0,5
28		2	Hex. sock. M12x20 DIN 7984 8.8 ZNS, with low head
29		2	Hex. sock. M10x20 DIN 7984 8.8 ZNS, with low head
30	600062-0351-028	1	OmniFix Kit M6 240x240 Toolkit
31	600062-0215-038	1	OmniFix Kit M6 240x240 Case (empty case with foam inlay)