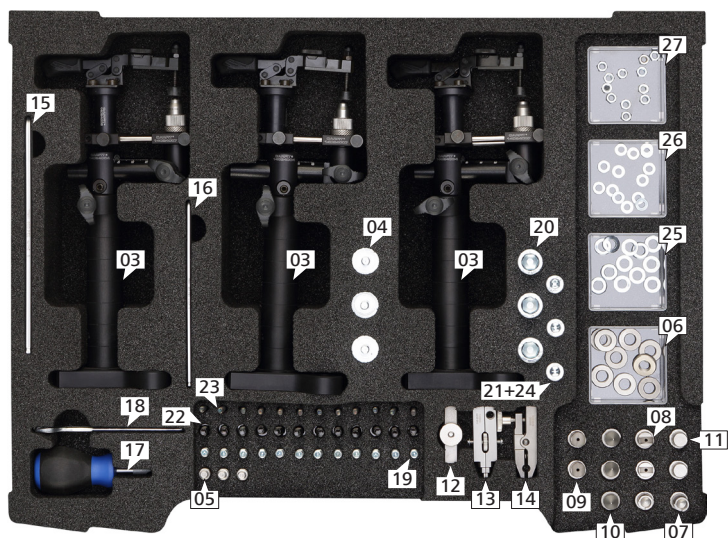




OmniFix Kit Jointed Arm 500x400

600062-0001-259



Pos.	Item no.	Qty.	Description
01	600062-0001-259	1	OmniFix Kit Jointed Arm, 500x400 mm
02	600062-0210-565	1	OmniFix Kit Jointed Arm 500x400 Case (empty case with foam inlay)
03	600062-0000-228	3	Gelenkarm Einheit D25, Gridplate 50, short version
04	600062-0001-245	3	Part Fastening D20 M6 - Flat Magnet
05	600062-0215-020	3	Thread Adapter M6 - M8x0,5
06	600062-0000-213	3	Part Support D10 M8x0,5 - Knurled Nut
07	600062-0215-005	2	Part Support D10 M8x0,5 - Corner Support
08	600062-0215-028	2	Part Support D10 M8x0,5 - Prism D10, narrow
09	600062-0215-007	2	Part Support D10 M8x0,5 - Prism D10
10	600062-0215-008	3	Part Support D10 M8x0,5 - Cone Support
11	600062-0215-009	2	Part Support D10 M8x0,5 - Flat Support
12	600062-0215-017	1	Connecting Elements D10 M6 - Hinge L40
13	600062-0215-016	1	Part Fastening D10 M6 - Parallel Clamp

Pos.	Item no.	Qty.	Description
14	600062-0215-015	1	Part Fastening D10 M6 - Pliers Clamp
15		1	Allen-Wrench AF 5mm
16		1	Allen-Wrench AF 3mm
17		1	Flat Head Screwdriver - short
18		1	Open-ended Wrench AF 10mm
19	600062-0210-024	12	Thread Adapter - M6x20, centrally carved
20		3	Socket Head Screw M12x25 DIN 7984 ZNS
21		3	Socket Head Screw M8x25 DIN 912 ZNS, 8.8
22		12	Socket Head Screw M6x20 DIN 912 ZNS, 8.8
23		12	Socket Head Screw M4x20 DIN 912 ZNS, 8.8
24		3	Washer D=8,4 DIN 125 ST ZNS
25		12	Washer D=6,4 DIN 125 ST ZNS
26		12	Washer D=4,3 DIN 125 ST ZNS
27		10	Hexagon nut M4 DIN 439 ZNS, low version