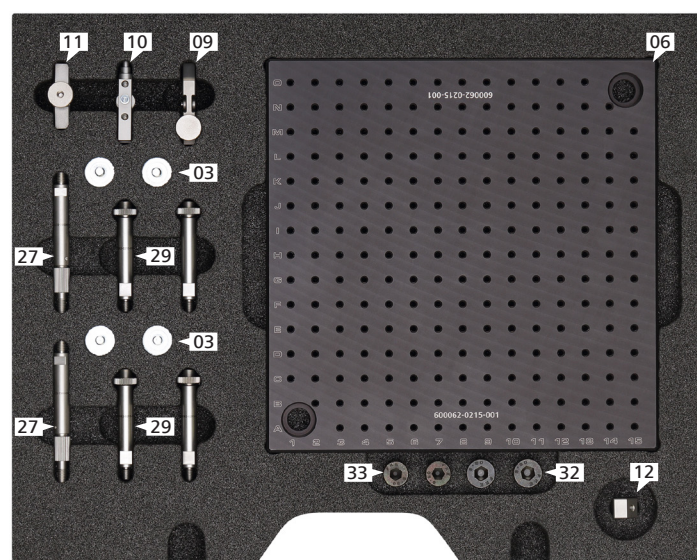
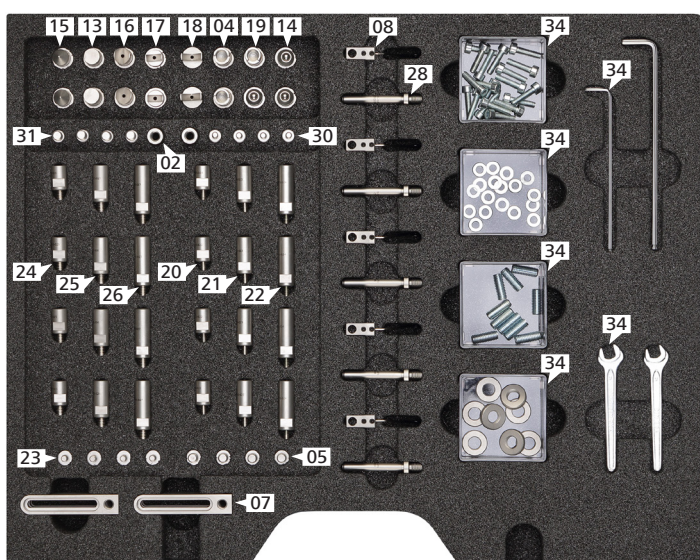




## OmniFix Kit M4 240x240

600062-0351-027



| Pos. | Item no.        | Qty. | Description                                 |
|------|-----------------|------|---|
| 01   | 600062-0351-027 | 1    | OmniFix Kit - M4, 240x240mm                 |
| 02   | 600062-0210-131 | 2    | Column D10 M6 FF - L15                      |
| 03   | 600062-0001-245 | 4    | Part Fastening D20 M6 - Flat Magnet         |
| 04   | 600062-0351-009 | 2    | Part Support D10 M8x0,5 - Longitudinal      |
| 05   | 600062-0351-030 | 4    | Adapter Column D10 M6 - M4 MF - L15         |
| 06   | 600062-0215-001 | 1    | Gridplate 15x240x240, Grid 15x15mm - M4     |
| 07   | 600062-0215-002 | 6    | Bracket 12x10x60 - M6                       |
| 08   | 600062-0215-013 | 5    | Part Fastening D10 D5 - Wire Clip           |
| 09   | 600062-0215-015 | 1    | Part Fastening D10 M6 - Pliers Clamp        |
| 10   | 600062-0215-016 | 1    | Part Fastening D10 M6 - Parallel Clamp      |
| 11   | 600062-0215-017 | 1    | Connecting Elements D10 M6 - Hinge L40      |
| 12   | 600062-0215-018 | 1    | Connecting Elements D10 M4 - Angle 45°      |
| 13   | 600062-0215-009 | 2    | Part Support D10 M8x0,5 - Flat Support      |
| 14   | 600062-0215-006 | 3    | Part Support D10 M8x0,5 - Spherical         |
| 15   | 600062-0215-008 | 2    | Part Support D10 M8x0,5 - Cone Support      |
| 16   | 600062-0215-007 | 2    | Part Support D10 M8x0,5 - Prism D10         |
| 17   | 600062-0215-028 | 2    | Part Support D10 M8x0,5 - Prism D10, narrow |
| 18   | 600062-0215-029 | 2    | Part Support D10 M8x0,5 - Prism D14, narrow |
| 19   | 600062-0215-005 | 1    | Part Support D10 M8x0,5 - Corner Support    |

| Pos. | Item no.        | Qty. | Description   |
|------|-----------------|------|---|
| 20   | 600062-0215-022 | 4    | Column D10 M4 MF - L15                                      |
| 21   | 600062-0215-023 | 4    | Column D10 M4 MF - L22,5                                    |
| 22   | 600062-0215-024 | 4    | Column D10 M4 MF - L30                                      |
| 23   | 600062-0215-012 | 4    | Adapter Column D10 M4 - M6 MF - L15                         |
| 24   | 600062-0215-025 | 4    | Column D10 M6 MF - L15                                      |
| 25   | 600062-0215-026 | 4    | Column D10 M6 MF - L22,5                                    |
| 26   | 600062-0215-027 | 4    | Column D10 M6 MF - L30                                      |
| 27   | 600062-0215-014 | 2    | Column D10 M6 - Adjustable                                  |
| 28   | 600062-0215-010 | 5    | Part Fastening D10 - Column for Clip, L=40mm                |
| 29   | 600062-0215-004 | 4    | Column D10 M6/M8x0,5 - L50                                  |
| 30   | 600062-0215-019 | 4    | Thread Adapter M4 - M8x0,5                                  |
| 31   | 600062-0215-020 | 4    | Thread Adapter M6 - M8x0,5                                  |
| 32   |                 | 2    | Hex. sock. M12x20 DIN 7984 8.8 ZNS<br>with low head         |
| 33   |                 | 2    | Hex. sock. M10x20 DIN 7984 8.8 ZNS<br>with low head         |
| 34   | 600062-0351-029 | 1    | OmniFix Kit M4 240x240 Toolkit                              |
| 35   | 600062-0215-040 | 1    | OmniFix Kit M4 240x240 Case<br>(empty case with foam inlay) |