

Pre-owned Machine with ZEISS Seal of Quality

ZEISS RT-300 NT 1Vss (former RT05-300)

Accessory for coordinate measuring machine on a proven system.
Quickly available at an attractive price.

Serial number.: 83719

Measuring range	360°, motor driven optional rotatable		
Machine dimensions	L 505	B 300	H 150
Accuracy: Angle position repeatability 1"	fa: 1µm	fr: 1µm	ft: 1 "
Measuring machine weight	75 kg	max. workpiece weight	100 kg

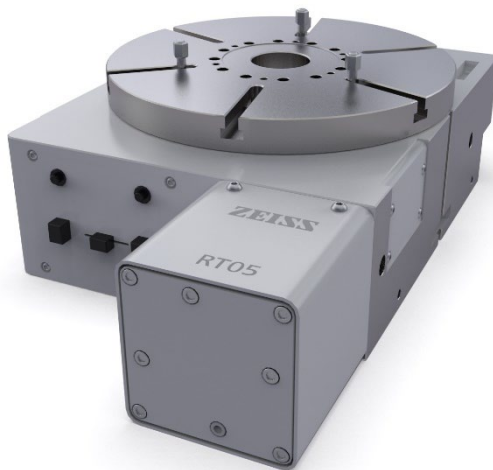
Your benefits:

- Computer-controlled precision rotary table
- operating mode vertical and horizontal
- Proven and precise mechanical parts checked and completely refurbished by the manufacturer
- 12-month warranty
- Corresponds to the current ones machine guidelines

Delivery package

- Rotary table RT-300 NT 1Vss, mobil

ATTENTION: If no RT05-300 was previously available, the connection kit 620800-9143-00 must be ordered separately.



Sample system

Carl Zeiss
Industrielle Messtechnik GmbH
73446 Oberkochen/Germany

Phone: +49 7364 20-6336
Fax: +49 7364 20-3870
Email: used-cmms@zeiss.de
Internet: www.zeiss.de/imt

